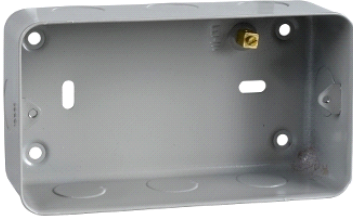


## GBG02

Exclusive Metal clad - surface grid mounting box -  
3...4 gangs - grey



### Main

Range of product	Exclusive
Aesthetic name	Metal clad
Product or component type	Grid mounting box
Colour tint	Grey
Quantity per set	Set of 5

### Complementary

Device mounting	Surface
Mounting support	Wall mounted
Number of gangs	3...4 gangs
Cable entry	Knock-outs Ø 20 mm
Fixing mode	By screws
Material	Powder coated steel
Type of installation	Indoor
Depth	42 mm
Width	136 mm
Height	76 mm
Product weight	0.228 kg

### Environment

standards	BS EN 60670-1
-----------	---------------

### Offer Sustainability

Sustainable offer status	Not Green Premium product
RoHS (date code: YYWW)	Compliant - since 1244 - Schneider Electric declaration of conformity
REACH	Reference not containing SVHC above the threshold
Product end of life instructions	Need no specific recycling operations

### Contractual warranty

Warranty period	18 months
-----------------	-----------