



Insulated enclosures Surface mounting

Fix-o-Rail Classic

IP30 / IP40

Approvals / Marking



Standards

BS EN 60439-3

Applications



Fix-o-Rail Classic and the accessories are a homogeneous system for power distribution in new homes, adding add-on devices and replacing old units.

Features

- Protection degree: IP30
- IP40 with door (optional)
- Colour: RAL 9010
- 13, 26, 39 and 52 modules
- Total insulation (with backplate and door)
- Transparent or plain door
- Surface mounting
- Adjustable DIN-rail
- ABS for the covers
- Polycarbonate for the transparent doors
- Flame resistance: self extinguishing material, resist the glowwire 650°C

Components

The Fix-o-Rail Classic A packaging includes:

- A mounting frame
- A protective cover
- A backplate
- A support with earth and neutral terminals
- A modular blank plate
- Four insulating caps
- Labels for circuit identification
- Installation guidelines

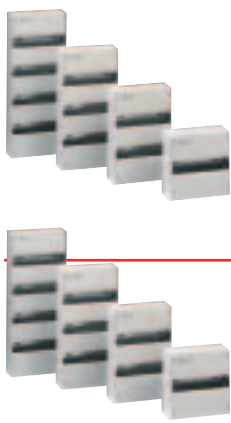
The Fix-o-Rail Classic B packaging includes:

- A mounting frame
- A protective cover
- Labels for circuit identification
- Installation guidelines

Advantages

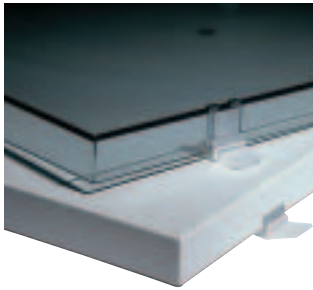
- Two DIN-rail positions: 47 and 55 mm
- Generous wiring room 30 mm behind the mounting frame
- 13 modules on each row
- 125 mm distance between two DIN-rails
- Self positioning protective cover, fixation with four captive quarter-turn screws
- Door can be opened to the left or the right and hinges over 180°
- The Classic range can be coupled

Fix-o-Rail Classic



Classic A	H x W x D (mm)	Equipment	Number of rows	Number of modules	Ref. No.	Pack.
	250 x 250 x 94	Earth bar: connection 8 x 16 mm ² Neutral bar: connection 10 x 16 mm ²	1	13	619200	1
	375 x 250 x 94	Earth bar: connection 18 x 16 mm ² Neutral bar: connection 2(8 x 16 mm ²)	2	26	619201	1
	500 x 250 x 94	Earth bar: connection 27 x 16 mm ² Neutral bar: connection 2(8 x 16 mm ²)	3	39	619202	1
	625 x 250 x 94	Earth bar: connection 27 x 16 mm ² Neutral bar: connection 2(8 x 16 mm ²)	4	52	618116	1
Classic B	H x W x D (mm)	Equipment	Number of rows	Number of modules	Ref. No.	Pack.
	250 x 250 x 94		1	13	619203	1
	375 x 250 x 94		2	26	619204	1
	500 x 250 x 94		3	39	619205	1
	625 x 250 x 94		4	52	618117	1

Accessories



Transparent door + hinges		
	618503	1
1 row		
	618509	1
2 rows		
	618515	1
3 rows		
	617961	1
4 rows*		
Plain white door + hinges		
	619206	1
1 row		
	619207	1
2 rows		
	619208	1
3 rows		
	617962	1
4 rows*		

Insulated support for earth and neutral terminals

618530 1

Can be fixed on a mounting frame easily

Can be equipped with below mentioned earth or neutral terminals



1x	2x	3x	Combination
8 x 16 mm ²	8 x 16 mm ²	8 x 16 mm ²	1 (8 x 16 mm ²) + 1 (10 x 16 mm ²)
10 x 16 mm ²	10 x 16 mm ²		1 (8 x 16 mm ²) + 1 (14 x 16 mm ²)
14 x 16 mm ²			1 (8 x 16 mm ²) + 1 (18 x 16 mm ²)
18 x 16 mm ²			1 (10 x 16 mm ²) + 1 (14 x 16 mm ²)
27 x 16 mm ²			

Equipped insulated support 3P+N + earth assembly

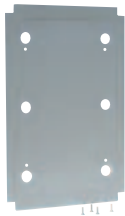
618529 1

5 (8 x 16 mm²)



Insulated backplate + screws

Protects the cables and devices when the cover is mounted on a moist or aggressive surface



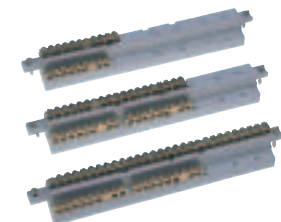
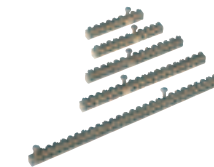
	618505	1
For Classic B - 1 row		
	618511	1
For Classic B - 2 rows		
	618517	1
For Classic B - 3 rows		
	619411	1
For Classic B - 4 rows		

Equipped insulated support

	618506	1
For Classic B - 1 row		
E: 8 x 16 mm ² & N: 10 x 16 mm ²		
	618512	1
For Classic B - 2 rows		
E: 18 x 16 mm ² & N: 2 (8 x 16 mm ²)		
	618518	1
For Classic B - 3 rows		
E: 27 x 16 mm ² & N: 2 (8 x 16 mm ²)		

Earth or neutral terminals

	618519	4
8 x 16 mm ²		
	618520	4
10 x 16 mm ²		
	618521	4
14 x 16 mm ²		
	618522	4
18 x 16 mm ²		
	618523	4
27 x 16 mm ²		



E = earth connection
N = neutral connection

* in metal

A

B

C

D

E

F

G

X

Accessories Fix-o-Rail Classic (continued)



Shrouding for earth and neutral support
Protects against direct contact with live parts

618531	1
--------	---

Cable entry
For a perfect finish
Can be fixed on the top as well as on the bottom of the mounting frame

619084	1
--------	---

Knockouts: 11 x PG 13.5 + 1 x PG 21/29



Metal support for connection terminals

618524	1
--------	---

Blank plate 4 modules

610382	4
--------	---

Length: 72 mm
Cut out width : 45 mm
Can be cut into 9 mm length
RAL 9010



Connection terminals

610185	4
--------	---

Phase terminal 6 x 10 mm² + 2 x 16 mm²

610186	4
--------	---

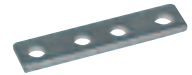
Earth terminal 6 x 10 mm² + 2 x 16 mm²

610187	4
--------	---

Neutral terminal 6 x 10 mm² + 2 x 16 mm²

Coupling

618528	2
--------	---



Sealing bracket

618527	2
--------	---

