



NEVADA LED

Linkable under-cabinet LED fittings



EACH FITTING SUPPLIED COMPLETE WITH BUTT CONNECTOR

MALE/FEMALE CONNECTIONS FOR USE WITH LINK-LEADS OR BUTT CONNECTOR



APPLICATIONS

- Retail shelf lighting
- Kitchen cabinet lighting

CONSTRUCTION

- Polycarbonate body
- Acrylic (PMMA) diffuser giving excellent diffusion of individual LEDs and very even illumination
- Supplied complete with 2m mains lead, butt-connector and mounting clips
- Mounting clips allow vertical or side mounting
- Supplied in blister pack display packaging

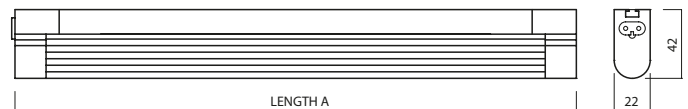
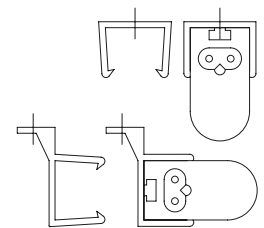
TECHNICAL DETAILS

- LEDs
- Individually switched
- Linkable, subject to limits
 - Directly butted end-to-end using butt-connector (supplied), or
 - Using link-leads, ordered as separate items

OPTIONS

LINKS Link leads available in 3 lengths, ordered as separate items.

MOUNTING CLIP ADAPTABLE FOR VERTICAL OR SIDE MOUNTING



ORDER CODE	DESCRIPTION
NNV2/LED/840	NEVADA 2W LED LINKLIGHT 267MM
NNV4/LED/840	NEVADA 4W LED LINKLIGHT 343MM
NNV8/LED/840	NEVADA 8W LED LINKLIGHT 603MM
NNV12/LED/840	NEVADA 12W LED LINKLIGHT 903MM
NNV17/LED/840	NEVADA 17W LED LINKLIGHT 1203MM
NNV24/LED/840	NEVADA 24W LED LINKLIGHT 1503MM
ACCESSORIES & SPARES	
NNV/LL/250	NEVADA 250MM LINK LEAD
NNV/LL/500	NEVADA 500MM LINK LEAD
NNV/LL/1000	NEVADA 1000MM LINK LEAD
NNV/SL/2000	NEVADA 2000MM STARTER LEAD

WATTAGE	NO OF LEDs	MAX # OF FITTINGS PER CONTINUOUS RUN	LUMINAIRE LUMENS	(A) LENGTH (MM)
2	30	20	210	267
4	48	15	330	343
8	96	15	710	603
12	168	10	1,184	903
17	240	8	1,750	1,203
24	294	6	2,150	1,503