



# MASTERCcolour CDM-TD

## MASTERCcolour CDM-TD 70W/830 RX7s 1CT/12

Range of double-ended, compact, high-efficiency, discharge lamps with a stable color over lifetime and a crisp, sparkling light

### Product data

General Information	
Cap-Base	RX7S [ RX7s]
Operating Position	P45 [ Parallel +/-45D or Horizontal(HOR)]
Life to 5% Failures (Nom)	9000 h
Life to 10% Failures (Nom)	13000 h
Life to 20% Failures (Nom)	15000 h
Life to 50% Failures (Nom)	16000 h
ANSI Code HID	C139/E
Light Technical	
Color Code	830 [ CCT of 3000K]
Luminous Flux (Nom)	6000 lm
Luminous Flux (Rated) (Nom)	6000 lm
Color Designation	Warm White (WW)
Lumen Maintenance 10000 h (Nom)	70 %
Lumen Maintenance 2000 h (Min)	80 %
Lumen Maintenance 2000 h (Nom)	85 %
Lumen Maintenance 5000 h (Min)	70 %
Lumen Maintenance 5000 h (Nom)	80 %
Chromaticity Coordinate X (Nom)	0.443
Chromaticity Coordinate Y (Nom)	0.401

Correlated Color Temperature (Nom)	3000 K
Luminous Efficacy (Rated) (Nom)	85 lm/W
Color Rendering Index (Min)	77
Color Rendering Index (Nom)	80

Operating and Electrical	
Power (Rated) (Nom)	71.0 W
Lamp Current Run-Up (Max)	1.4 A
Lamp Current (EM) (Nom)	0.95 A
Ignition Supply Voltage (Max)	198 V
Ignition Peak Voltage (Max)	5000 V
Ignition Supply Voltage (Min)	198 V
Re-Ignition Time (Min) (Max)	15 min
Ignition Time (Max)	30 s
Voltage (Max)	102 V
Voltage (Min)	86 V
Voltage (Nom)	94 V

Controls and Dimming	
Dimmable	No

# MASTERCcolour CDM-TD

Run-Up Time 90% (Max)	3 min
-----------------------	-------

## Mechanical and Housing

Bulb Finish	Clear
-------------	-------

## Approval and Application

Energy Efficiency Label (EEL)	A
Mercury (Hg) Content (Nom)	3.4 mg
Energy Consumption kWh/1000 h	78 kWh

## UV

Pet (Niosh) (Min)	8 h/500lx
Damage Factor D/fc (Max)	0.3

## Luminaire Design Requirements

Bulb Temperature (Max)	500 °C
------------------------	--------

Pinch Temperature (Max)	280 °C
-------------------------	--------

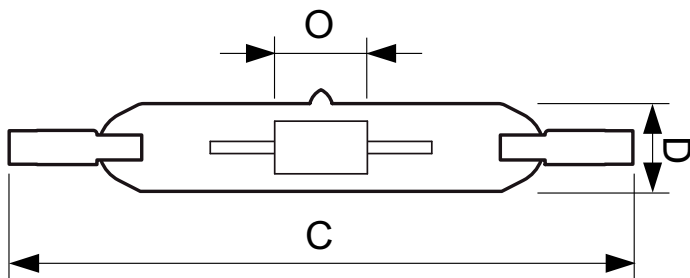
## Product Data

Full product code	871150019782515
Order product name	MASTERCcolour CDM-TD 70W/830 RX7s 1CT/12
EAN/UPC - Product	8711500197825
Order code	928082205125
Numerator - Quantity Per Pack	1
Numerator - Packs per outer box	12
Material Nr. (12NC)	928082205125
Net Weight (Piece)	21.000 g
ILCOS Code	MD/UB-70/830-H-RX7s-22/117.6

## Warnings and Safety

- Use only in totally enclosed luminaire, even during testing (IEC61167, IEC 62035, IEC60598)
- The luminaire must be able to contain hot lamp parts if the lamp ruptures
- Lamps may use electronic or electromagnetic control gear
- Control gear must include end-of-life protection (IEC61167, IEC 62035)
- A lamp breaking is extremely unlikely to have any impact on your health. If a lamp breaks, ventilate the room for 30 minutes and remove the parts, preferably with gloves. Put them in a sealed plastic bag and take it to your local waste facilities for recycling. Do not use a vacuum cleaner.

## Dimensional drawing

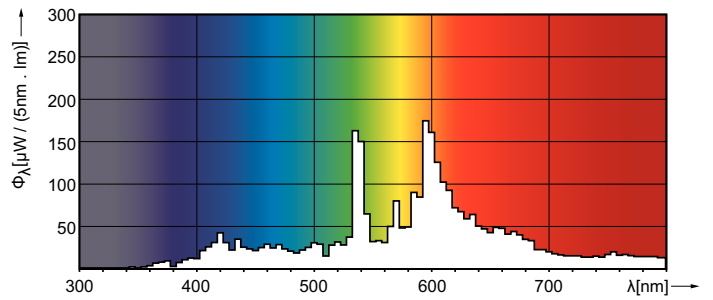
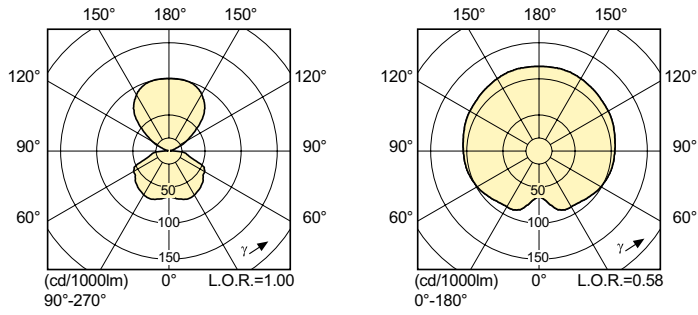


Product	D (max)	D	O	C (max)
MASTERCcolour CDM-TD 70W/830 RX7s 1CT/12	22 mm	0.75 in	8 mm	119.63 mm

CDM-TD 70W/830 RX7s

# MASTERColour CDM-TD

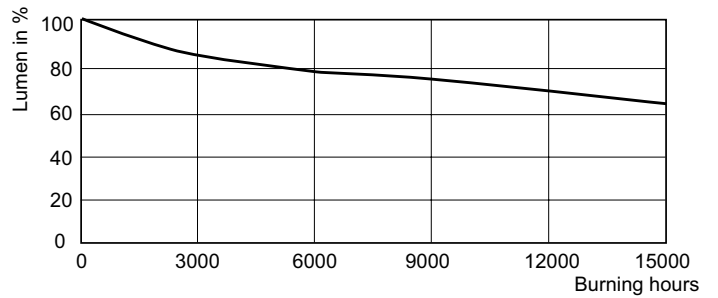
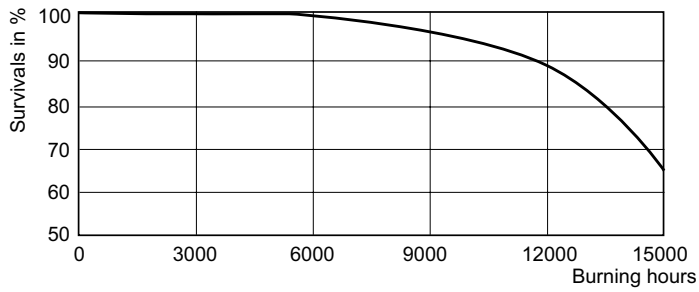
## Photometric data



CDM-TD 70W /830

MASTERColour CDM-TD /830

## Lifetime



CDM-TD Life Expectancy

CDM-TD Lumen Maintenance

