



MASTERC colour CDM-TD

MASTERC colour CDM-TD 70W/942 RX7s 1CT/12

Range of double-ended, compact, high-efficiency, discharge lamps with a stable color over lifetime and a crisp, sparkling light

Product data

General Information	
Cap-Base	RX7S [RX7s]
Operating Position	P45 [Parallel +/-45D or Horizontal(HOR)]
Life to 5% Failures (Nom)	9000 h
Life to 10% Failures (Nom)	13000 h
Life to 20% Failures (Nom)	15000 h
Life to 50% Failures (Nom)	16000 h
ANSI Code HID	M139/E
Light Technical	
Color Code	942 [CCT of 4200K]
Luminous Flux (Nom)	5600 lm
Luminous Flux (Rated) (Nom)	5600 lm
Color Designation	Cool White (CW)
Lumen Maintenance 10000 h (Nom)	60 %
Lumen Maintenance 2000 h (Min)	70 %
Lumen Maintenance 2000 h (Nom)	85 %
Lumen Maintenance 5000 h (Min)	60 %
Lumen Maintenance 5000 h (Nom)	70 %
Chromaticity Coordinate X (Nom)	0.383
Chromaticity Coordinate Y (Nom)	0.370

Correlated Color Temperature (Nom)	4200 K
Luminous Efficacy (Rated) (Nom)	80 lm/W
Color Rendering Index (Min)	-
Color Rendering Index (Nom)	92

Operating and Electrical	
Power (Rated) (Nom)	71.0 W
Lamp Current Run-Up (Max)	1.4 A
Lamp Current (EM) (Nom)	0.98 A
Ignition Supply Voltage (Max)	198 V
Ignition Peak Voltage (Max)	5000 V
Ignition Supply Voltage (Min)	198 V
Re-Ignition Time (Min) (Max)	15 min
Ignition Time (Max)	30 s
Voltage (Max)	98 V
Voltage (Min)	82 V
Voltage (Nom)	90 V

Controls and Dimming	
Dimmable	No

MASTERCour CDM-TD

Run-Up Time 90% (Max)	3 min
-----------------------	-------

Mechanical and Housing

Bulb Finish	Clear
-------------	-------

Approval and Application

Energy Efficiency Label (EEL)	A
Mercury (Hg) Content (Nom)	4.8 mg
Energy Consumption kWh/1000 h	78 kWh

UV

Pet (Niosh) (Min)	8 h/500lx
Damage Factor D/fc (Max)	0.4

Luminaire Design Requirements

Bulb Temperature (Max)	500 °C
------------------------	--------

Pinch Temperature (Max)	280 °C
-------------------------	--------

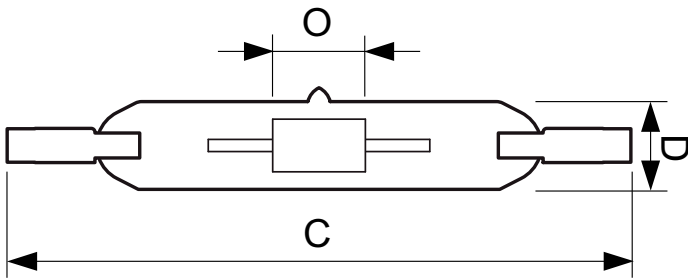
Product Data

Full product code	871150020002015
Order product name	MASTERCour CDM-TD 70W/942 RX7s 1CT/12
EAN/UPC - Product	8711500200020
Order code	928084705133
Numerator - Quantity Per Pack	1
Numerator - Packs per outer box	12
Material Nr. (12NC)	928084705133
Net Weight (Piece)	21.000 g
ILCOS Code	MD/UB-70/942-H-RX7s-22/117.6

Warnings and Safety

- Use only in totally enclosed luminaire, even during testing (IEC61167, IEC 62035, IEC60598)
- The luminaire must be able to contain hot lamp parts if the lamp ruptures
- Lamps may use electronic or electromagnetic control gear
- Control gear must include end-of-life protection (IEC61167, IEC 62035)
- A lamp breaking is extremely unlikely to have any impact on your health. If a lamp breaks, ventilate the room for 30 minutes and remove the parts, preferably with gloves. Put them in a sealed plastic bag and take it to your local waste facilities for recycling. Do not use a vacuum cleaner.

Dimensional drawing

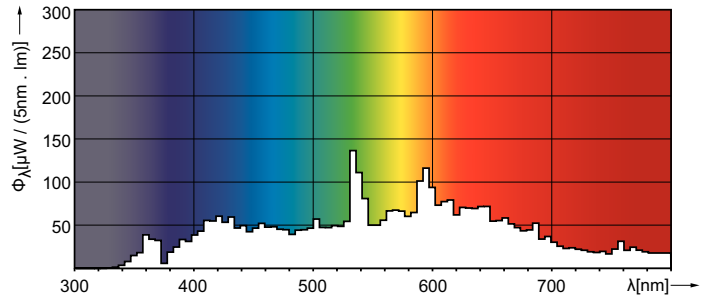
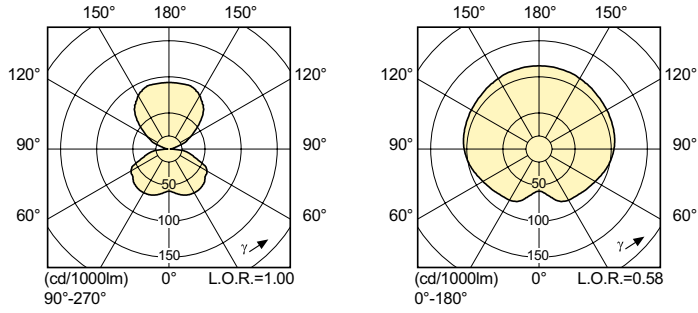


Product	D (max)	D	O	C (max)
MASTERCour CDM-TD 70W/942 RX7s 1CT/12	22 mm	0.75 in	7 mm	119.63 mm

CDM-TD 70W/942 RX7s

MASTERColour CDM-TD

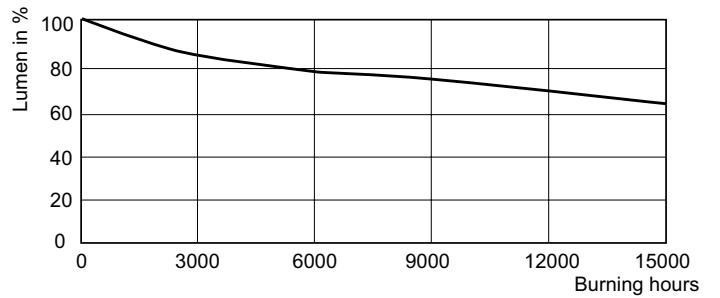
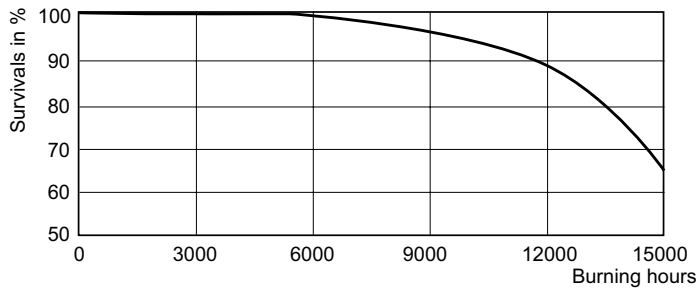
Photometric data



CDM-TD 70W /942

MASTERColour CDM-TD /942

Lifetime



CDM-TD Life Expectancy

CDM-TD Lumen Maintenance

