

Triton LED Surface/Suspended

DOWNLIGHT LUMINAIRES

Ref -SL1



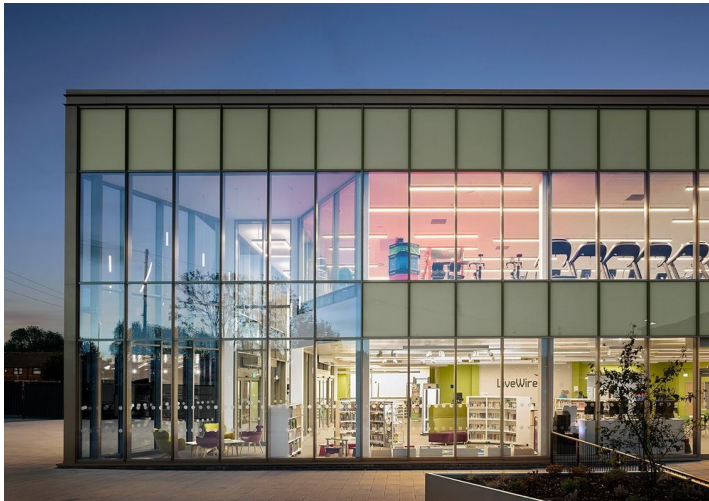
CE

LED

IP54

IK05

BIM



Description

Where surface or suspended downlighters are required our Triton LED offers exceptional performance where a decorative appearance is required. IP44 as standard.

Application

- Offices
- Receptions
- Circulation Areas

Body & Finish

Formed from Die-Cast aluminium complete with a high performance SLM heat sink to ensure life and lumen package. Surface mounted as standard with an option of suspended mounting. IP44 as standard.

Attachments

- Suspended Version
- Single Wire Suspension
- Triple Wire Suspension
- White Flex
- Black Flex
- Any Body Colour Available (White Body as Standard)



Triton LED Surface/Suspended

DOWNLIGHT LUMINAIRES

Order Codes

Wattage	Luminous Flux	lm/W	Diameter	Depth	Product Code
16.3 W	2186 lm	114 lm/W	150 mm	170mm	SGL/LED/2400/TRI/SUR

Additional lumen outputs are available due to mA ratings and codes may vary from those stated. Please contact us for further details.

Sizes

Diameter: 150mm
Depth: 170mm

Control Gear

Tridonic/OSRAM

Standard LED
DALI Dimmable LED
Wi-Fi

Code Options

- Add /EMG to codes for Emergency
- Add /EMG/ST to codes for Self-Test Emergency
- Add /EMG/AD to codes for Addressable Emergency
- Add /DALI to codes for DALI Dimming Attachments
- Add /PIR to codes for PIR
- Add /WS to codes for Wire Suspension
-
-

LED Boards

- Tridonic/OSRAM LED
- Colour Temperatures Available: 3000k/4000k/5000k
- All LED data and performance data is taken at an ambient temperature of +25°C
-
-
-

Main Attributes

- Module efficacy up to 190 lm/W
- 50,000h L90 at 25°C
- Self Cooling
- Colour Rendering Index >80
- 7 Year Guarantee*
- CE Marked
- *Please refer to the Warranty for more information.

Photometrics

-