

# 25 YEARS

-

## WARRANTY COVERAGE

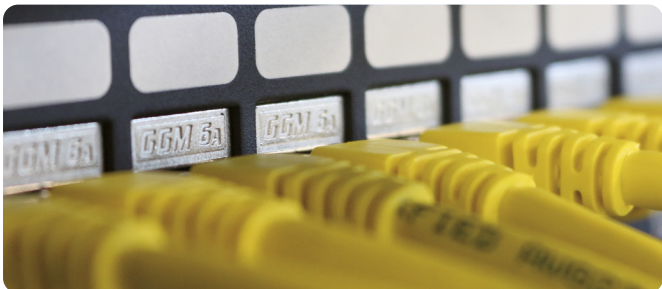
GIGAMEDIA's extended warranty offers a way to **secure investment for 25 years.**

The warranty programme covers the components, the manpower to replace it and warrants the end user that the installed cabling system will be free from defects during the period of coverage.

The installed channel links will support all applications listed in the ISO 11801 document, relative to the selected cabling performance (class E or class EA). The individual components will meet or exceed ISO 11801 requirements during this period and will conform mechanically.

The GIGAMEDIA Warranty programme is subject to installation by an authorized partner and a normal exploitation and maintenance as stated in the ISO standards.

Through the warranty programme, the beneficiary is guaranteed to be supplied with a new or repaired product of replacement in case of a defective link statement.



## CERTIFIED PARTNERS



GIGAMEDIA offers the warranty programme when **installed by an expert previously certified** as an agreed GIGAMEDIA Warranty installer.

The certified installers force themselves and commit to entrust qualified and trained staff with the installation in conjunction with ISO 11801 – CENELEC EN50173 & EN50174 standards.

This guarantees the GIGAMEDIA cabling system to be installed in the state of the art and in compliance with the European standards.

The qualified installers are strictly selected by cabling experts and are informed about the latest technologies integrated inside GIGAMEDIA products.

This ensures that **the installed cabling system is optimized.**

## TERMS & CONDITIONS

**The warranty programme is subject to the warranty terms & conditions and only applies when the installed system components have never been used before and bought from an official distribution channel. They must be installed by an authorized installer.**

The 25 years warranty programme only applies for CAT6/CAT6A listed materials, using GIGAMEDIA products on the entire permanent link.

The requested documents such as building plans, labeling plans, certification tests, calibration certificate, invoice copy, project completion report are necessary to obtain the warranty certificate. Since the patchcords are considered as consumables that have to be often replaced in a normal use, it benefits from the standard & legal warranty conditions.

Indirect losses resulting expressly from an outside cause and in particular: fire or explosion, lightning, cyclone, floods, earthquake and other natural risks or misuse, are excluded from the warranty programme.



## CABLE

<b>GGM C6AF2X4ZHT5</b>	Cable CAT6A 2x4 pairs AWG23 U/FTP LSZH Dca, White (500 m drum)
<b>GGM C6AF4PZHT5</b>	Cable CAT6A 4 pairs AWG23 U/FTP LSZH Dca, White (500 m drum)
<b>GGM C6AFF2X4ZHT5</b>	Cable CAT6A 2x4 pairs AWG23 F/FTP LSZH Dca, White (500 m drum)
<b>GGM C6AFF4PFRBT5</b>	Cable CAT6A 4 pairs AWG23 F/FTP LSZH-FR B2ca, Green (500 m drum)
<b>GGM C6AFF4PFRT5</b>	Cable CAT6A 4 pairs AWG23 F/FTP LSZH-FR Cca, Yellow (500 m drum)
<b>GGM C6AFF4PZHT5</b>	Cable 4 pairs CAT6A F/FTP LSZH Dca, White (500 m drum)
<b>GGM C6AUF2X4ZHT5</b>	Cable CAT6A 2x4 pairs AWG23 U/FTP LSZH Dca, White (500 m drum)
<b>GGM C6AUF4PFRT5</b>	Cable CAT6A 4 pairs AWG23 U/FTP LSZH-FR Cca s1a a1 d1, Yellow (500 m drum)
<b>GGM C6AUF4PZHT5</b>	Cable CAT6A 4 pairs AWG23 U/FTP LSZH Dca, White (500 m drum)
<b>GGM C6U4PFRBT5</b>	Cable CAT6 4 pairs AWG23 U/UTP LSZH-FR B2ca, Green (500 m drum)
<b>GGM C6U4PFRHT5</b>	Cable CAT6 4 pairs AWG23 U/UTP LSZH-FR Cca, Yellow (500 m drum)
<b>GGM C6U4PZHBT5</b>	Cable CAT6 4 pairs AWG23 U/UTP LSZH Dca, White (500 m drum)
<b>GGM C6UHR2X4FRT5</b>	Cable CAT6 2x4 pairs AWG24 U/UTP LSZH-FR Cca, White (500 m drum)
<b>GGM C6UHR2X4WT5</b>	Cable CAT6 2x4 pairs AWG24 E-Slim U/UTP LSZH Dca, White (500 m drum)
<b>GGM C6UHR4FRT5</b>	Cable CAT6 4 pairs AWG24 U/UTP LSZH-FR Cca, White (500 m drum)
<b>GGM C6UHR4WT5</b>	Cable CAT6 4 pairs AWG24 E-Slim U/UTP LSZH Dca, White (500 m drum)
<b>GGM C7SF2X4PHFT5</b>	Cable 2 x 4 pairs CAT7 S/FTP LSHF Orange (500 m drum)
<b>GGM C7SF4PFRT5</b>	Cable CAT7 4 pairs AWG23 S/FTP LSZH-FR Cca, Yellow (500 m drum)
<b>GGM C7SF4PHFT5</b>	Cable CAT6A 4 pairs CAT7 S/FTP LSHF Orange (500 m drum)
<b>GGM C6U4PDCARU3</b>	Cable CAT6 4P AWG24 U/UTP LSZH Dca, WHITE Box 305M
<b>GGM C6AU4PFRTU3</b>	Cable CAT6A 4Pairs AWG23 U/UTP LSOH-FR Cca, White (305 m Reel In Box)
<b>GGM C6AU4PFRT5</b>	Cable CAT6A 4Pairs AWG23 U/UTP LSOH-FR Cca, White (500 m drum)



## LOADED PATCH PANEL

<b>GGM NKJS24PC6A05</b>	19" 0.5U panel with 24 NKJ CAT6A PoE+ screened jacks
<b>GGM NKJS48PC6A05</b>	19" 0.5U panel (ID#25/48) with 24 jacks NKJ CAT6A PoE+ screened
<b>GGM PANC6ANKJS24P</b>	19" premium patch panel with 24 x CAT6A shielded 4PPoE jacks (NKJSC6ATL)
<b>GGM PANC6AS24P</b>	19" panel with 24 RJ45 screened jacks Cat6A Ed2.2
<b>GGM PANC6NKGU24P</b>	19" premium patch panel with 24 x CAT6 UTP 4PPoE jacks (NKJUC6TL)
<b>GGM PANC6U24P</b>	1U panel 24 ports equipped with 24 RJ45 CAT6 tool free unscreened jacks white
<b>GGM PANC6UN24P</b>	1U panel 24 ports equipped with 24 RJ45 CAT6 tool free unscreened jacks black



## EMPTY PATCH PANEL

<b>GGM PAN16VKP</b>	Premium metal panel to be equipped 16 ports 1U black
<b>GGM PAN24VK</b>	1U Initio 24P empty metal panel - black
<b>GGM PAN24VKP</b>	Premium metal panel to be equipped 24 ports 1U black
<b>GGM PANVC6A24BK</b>	Premium metal panel to be equipped 24 ports 1U black





## RJ45 JACKS

<b>GGM NKJSC6ATL</b>	CAT6A STP 10G Ed2.2 4PPoE screened jack
<b>GGM NKJSC6ATL24</b>	Pack of 24 screened jacks, small form factor, CAT6A STP 10G Ed2.2 4PPoE
<b>GGM NKJUC6TL</b>	Short unscreened jack CAT6 UTP 4PPoE Black
<b>GGM NKJUC6TL24</b>	Pack of 24 short unscreened jacks CAT6 UTP 4PPoE Black
<b>GGM NKJUC6TLW</b>	Short unscreened jack CAT6 UTP 4PPoE White
<b>GGM NKJUC6TLW24</b>	Pack of 24 short unscreened jacks CAT6 UTP 4PPoE White
<b>GGM PRJC6A10G</b>	RJ45 CAT6A Ed2.2 4PPoE screened tool free jack
<b>GGM PRJC6A10G24</b>	Pack of 24 tool free RJ45 CAT6A Ed2.2 4PPoE screened jacks
<b>GGM PRJC6UTL</b>	RJ45 CAT6 Keystone unscreened jack tool free
<b>GGM PRJC6UTL24</b>	Box of 24 RJ45 CAT6 Keystone unscreened jacks tool free
<b>GGM PRJC6UTLBK</b>	RJ45 CAT6 Keystone unscreened jack tool free, black
<b>GGM TRJUC6A10G</b>	CAT6A UTP RJ45 JACK Class EA 10G ISO 11801 4PPoE IP20 no specific tool required
<b>GGM TRJUC6A10GBK</b>	CAT6A UTP RJ45 JACK Class EA 10G ISO 11801 4PPoE IP20 no specific tool required



## FIELD PLUGS

<b>GGM NFPLUGITC6U</b>	NEW FIELD PLUG CATEGORY 6 5G ISO/IEC 11801 CLASS E UTP 4PPoE COMPLIANT TOOLLESS T568 A/B WIRING IP20 UNSHIELDED
<b>GGM PLUGIT10G</b>	RJ45 IP20 10G Class Ea screened plug
<b>GGM PLUGIT10GL20</b>	Pack of 20 RJ45 IP20 10G Class Ea screened plugs
<b>GGM PLUGIT10GS</b>	Short field plugs RJ45 10G Class Ea 4PPoE screened
<b>GGM PLUGIT10GSL20</b>	Pack of 20 short plugs RJ45 10G Class Ea 4PPoE screened



## BOXES

<b>GGM BOX001KV</b>	1 port RJ45 keystone box with protective shutter, white
<b>GGM BOX002KV</b>	EMPTY WHITE SURFACE MOUNT BOX 2 PORTS KEYSTONE 63X65X30MM WITH INSERT AND SHUTTER, UL 94V-0
<b>GGM BOX612KV</b>	6 or 12 port RJ45 box for GIGAMEDIA connectors



Further information  
on the warranty programme

[warranty.gigamedia.net](http://warranty.gigamedia.net)